



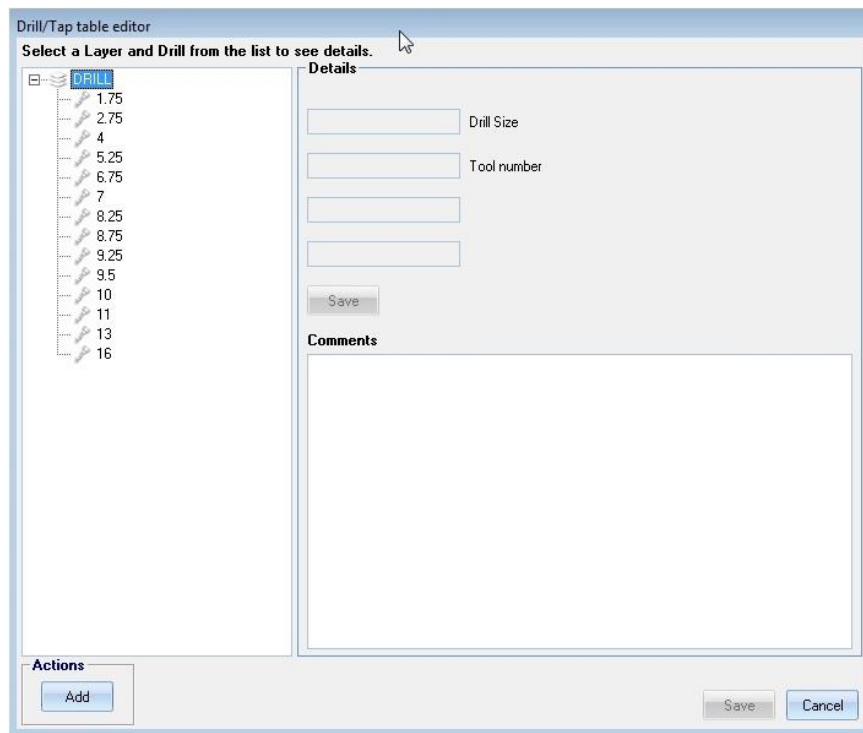
FastCAM® v7.3.89 Update Information

New Features:

The upgrade from 7.2.33+ versions to 7.3.xx involved a major upgrade to the Language files, which requires old language files (7.3 and below) to be replaced with new files.

General

- Added support for DWG 2013 files
- Updates to the service email module
- Better language file translations
- EdgeSmart technology improved
- Handling of DXF marking layer variations improved
- Improved the restore ability of FastPATH settings
- More accurate timings in the output NC when requested.
- Addressed issues with the mouse wheel zoom
- Added new Drill/Tap Table Editor for management of supported drill stations.



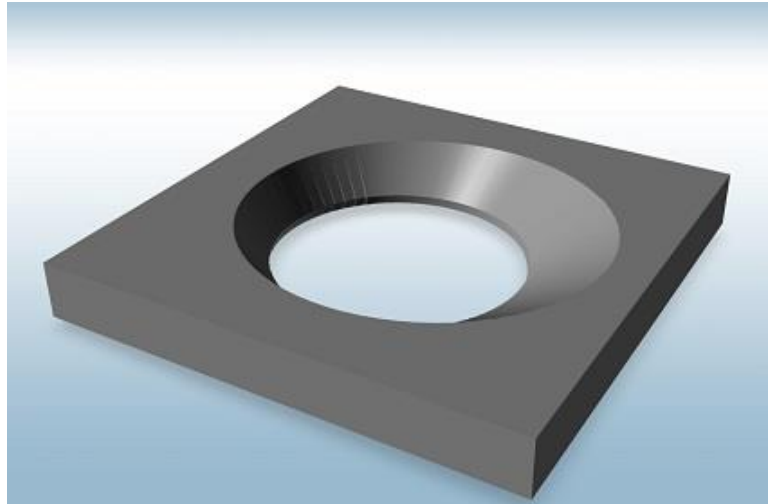
The new Drill/Tap Table Editor

Post Development

- MACH 3
- CUMAQ
- SILVERS

FastCAM®

- Pipe to plate Penetration beveling added



A part that has a pipe penetration bevel added

- 3D visualization improved
- Beveling entries and exits have been improved

FastNEST®

- Improved Drilling
- Collision checking has been improved when used in conjunction with marking layers
- Hole avoidance has been improved
- Better part within part nesting. *i.e. nesting smaller parts within parts with a large holes/interior cuts*
- Improved the Plate Cut off feature, including automatic torch off/on when the trim line coincides with an existing plate edge, and arc to arc common cutting.
- Feed rates adjustments for small holes improved

FastPLOT®

- Updates for the Farley Controller to be read more fluently

Revisions

- Various Bug Fixes